

# Global ETF Portfolio - Quarterly



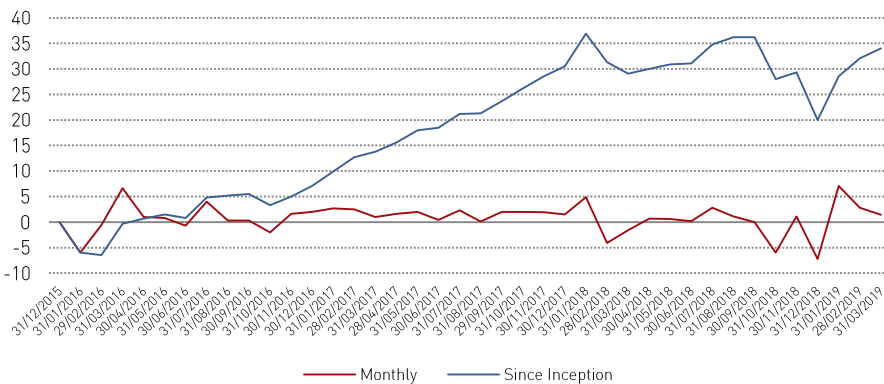
## Investment Objective

This is a global diversification portfolio aimed at long-term sustainable capital growth, with a limited element of capital protection. Investors are placed in the MSCI World Index tracker fund which exposes the investor to a broad range of developed market companies around the world, and allows the investor to diversify internationally and seek long-term growth.

## Investment Profile

- For entry-level investors seeking international exposure.
- Investors who have a longer investment term (in excess of 5 years).
- Value-based investors with a high-risk tolerance, seeking an internationally diversified managed portfolio.
- Main objective: Capital growth.
- Investors comfortable with inherent volatility of equities, as well as the volatility of international currencies.

## Cumulative Performance



March 2019

Risk profile



HIGH

Portfolio information

**Inception date**

1 June 2015

**Benchmark average**

MSCI World Index

**Investment manager**

Momentum Securities

**Stockbroker/custodian**

Momentum Securities

**Administration fee**

0.5% (annual)

**Minimum lump sum**

\$ 20 000

**Redemption periods**

5 business days

Disclaimer: Shares are generally medium- to long-term investments. The value of shares may go down as well as up and past performance is not necessarily a guide to the future.

Opinions expressed in this document are those held as at the date appearing in this material only. Momentum Securities shall not be liable or responsible for any use of this document or to any other person or entity for any inaccuracy of information contained in this document or any errors or omissions in its content, regardless of the cause of such inaccuracy, error or omission. This document should not be seen as an offer to purchase any specific product and should not be construed as advice or guidance in any form whatsoever.